

*Joy of Serving*

**GLARE**<sup>®</sup>  
*Your Companion Forever*



MELAMINEWARE

**HORECA**  
MADE OF PURE 100% MELAMINE



*Your Companion Forever*

*Welcome*

WE MAKE YOUR SOUL HAPPY

# PROFILE

*We are one of the leading Manufacturers of Melamine Decorative Tableware, Hotelware and Trays. Glare is globally known for its commitment to high quality and durable products. GLARE proudly presents a wide range of high quality melamine tableware. All products are proudly designed and manufactured in India.*

*Glare tableware has been developed to meet the most demanding standards of commercial foodservice operations offering unrivaled durability and strength in addition to beautiful design. Glare products are manufactured with pure 100% Melamine Food Grade to provide industry leading durability, bright surface and effective resistance to stains, scratches and impacts. Glare, the most affordable melamine tableware available in its class.*

*Glare tableware range is designed to provide heat resistance up to temperatures of 140°C to enable you to serve hot and yummy food without any fear. So, Glare tableware will prove your best solution to end your search for choice of safe, carefree and stylist melamine tableware range for daily use.*

*At Glare Group, there is no compromise when quality hygiene and safety is concerned, since 1992.*

**Care Instructions :**

- Melamine tableware products can be used for serving. (heat resistant up to temperatures of 140°C)
- Melamine tableware can be washed by hands or in an automatic dishwasher.
- Use non abrasive cleanser only.
- To Remove tough stains use non abrasive scouring pad with non abrasive cleanser.
- Heating through oven or microwave not recommended.



*Your Companion Forever*

**w w w . g l a r e i n d i a . c o m**



Your Companion Forever

# TEST REPORT

**SGS**

**TEST REPORT**

**Report No. : MAN:HL:1048002663**      **DATE : 03<sup>rd</sup> May, 2019**

**GLARE HOUSEHOLD PRIVATE LIMITED**  
 PLOT NO. 22, SURVEY NO. 166, NEAR SHANTIDHAM SOCIETY, NATIONAL HIGHWAY 27,  
 VERAVAL (SHAPAR)  
 DIST. RAJKOT,  
 360024 INDIA  
**CONTACT PERSON : VIREN PATEL**

**THE FOLLOWING SAMPLE(S) WAS/WERE SUBMITTED AND IDENTIFIED BY/ON BEHALF OF THE CUSTOMER AS :**

**SAMPLE DESCRIPTION**      MELAMINE PLATE  
**COLOUR**      WHITE  
**SAMPLE RECD ON**      01/04/2019  
**TEST PERFORMING DATE**      01/04/2019 TO 03/05/2019

**SUMMARY OF TEST RESULT:**

TEST REQUESTED	CONCLUSION
1.US FDA 177.1460 CHLOROFORM SOLUBLE EXTRACTIVES.	PASS
2.BISPHENOL A (BPA) CONTENT	SEE RESULT

**TEST(S) RESULT & METHOD :** PLEASE REFER TO NEXT PAGE(S)

**Per Pro SGS India Pvt. Ltd.**

*Sandip*

**SANDIP BHUSHAN(Asst. Manager)**  
 Email your Test Report Related Enquiries at Feedback.HLT@sgs.com

JOE No. : 1948801342      4374420      Page 1 of 3      Control No.: 1048002639

This document is issued by the Company subject to its General Conditions of Service printed overleaf, available on request or accessible at [http://www.sgs.com/terms\\_and\\_conditions.htm](http://www.sgs.com/terms_and_conditions.htm), for electronic format documents, subject to Terms and Conditions for Electronic Documents at [www.sgs.com/terms\\_e-document.htm](http://www.sgs.com/terms_e-document.htm). Attention is drawn to the limitation of liability, indemnification and jurisdiction issues defined therein. Any holder of this document is advised that information contained hereon reflects the Company's findings at the time of its intervention only and within the limits of Client's instructions, if any. The Company's sole responsibility is to its Client and this document does not exonerate parties to a transaction from exercising all their rights and obligations under the transaction documents. This document cannot be reproduced except in full, without prior written approval of the Company. Any unauthorized alteration, forgery or falsification of the content or appearance of this document is unlawful and offenders may be prosecuted to the fullest extent of the law. Unless otherwise stated the results shown in this test report refer only to the sample(s) tested and such sample(s) are retained for 30 days only.

**SGS India Pvt. Ltd.**      Consumer and Retail, Testing Laboratory Plot No. 21, Sector-3, MT Manesar, Gurgaon District, Haryana-122050 (India) Phone:(91-124) 678 7800

Member of the SGS Group (SGS SA)

**SGS**

**TEST REPORT**

**Report No. : MAN:HL:1048002663**      **DATE : 03<sup>rd</sup> May, 2019**

**TEST RESULTS:**

**1 US FDA 177.1460 CHLOROFORM SOLUBLE EXTRACTIVES:-**  
**METHOD:** 21 CFR 177.1460 With Reference to 175.300 (d) FOR REPEATED USE:

Extractants	Test condition	Result (mg/inch <sup>2</sup> )	Acceptable limit (Repeated Use) (mg/inch <sup>2</sup> )	Conclusion
Distilled Water	120° F for 24 hours	Not Detected	50.5	Pass
5% Alcohol	120° F for 24 hours	Not Detected	50.5	Pass
n-Heptane	70° F for 30 Min.	Not Detected	50.5	Pass

**Tested Item:** MELAMINE PLATE

**Note :-**  
 - mg/inch<sup>2</sup> = milligram per square inch.  
 - Test Condition has been provided by client.  
 - Detection Limit: 1mg/inch<sup>2</sup>  
 - Testing has been subcontracted to SGS approved lab.

**2 BISPHENOL A (BPA) CONTENT:**  
**Method:** Solvent extraction and analysis by LC/MS

Test Name	Result (mg/kg)	Requirement (mg/kg)
Bisphenol A (BPA) Content	Not Detected	

**Detection Limit:** 0.1 mg/kg.

**Tested Item:** MELAMINE PLATE

**Note:**  
 1. Testing has been subcontracted to SGS approved lab.  
 2. Testing has been performed as per client's request.

JOE No. : 1948801342      4374420      Page 2 of 3      Control No.: 1048002639

This document is issued by the Company subject to its General Conditions of Service printed overleaf, available on request or accessible at [http://www.sgs.com/terms\\_and\\_conditions.htm](http://www.sgs.com/terms_and_conditions.htm), for electronic format documents, subject to Terms and Conditions for Electronic Documents at [www.sgs.com/terms\\_e-document.htm](http://www.sgs.com/terms_e-document.htm). Attention is drawn to the limitation of liability, indemnification and jurisdiction issues defined therein. Any holder of this document is advised that information contained hereon reflects the Company's findings at the time of its intervention only and within the limits of Client's instructions, if any. The Company's sole responsibility is to its Client and this document does not exonerate parties to a transaction from exercising all their rights and obligations under the transaction documents. This document cannot be reproduced except in full, without prior written approval of the Company. Any unauthorized alteration, forgery or falsification of the content or appearance of this document is unlawful and offenders may be prosecuted to the fullest extent of the law. Unless otherwise stated the results shown in this test report refer only to the sample(s) tested and such sample(s) are retained for 30 days only.

**SGS India Pvt. Ltd.**      Consumer and Retail, Testing Laboratory Plot No. 21, Sector-3, MT Manesar, Gurgaon District, Haryana-122050 (India) Phone:(91-124) 678 7800

Member of the SGS Group (SGS SA)

**SGS**

**TEST REPORT**

**Report No. : MAN:HL:1048002632**      **DATE :10/04/2019**  
 \* 1048002632 \*

**GLARE HOUSEHOLD PRIVATE LIMITED**  
 PLOT NO. 22, SURVEY NO. 166, NEAR SHANTIDHAM SOCIETY,  
 NATIONAL HIGHWAY 27, GONDAL ROAD, VERAVAL (SHAPAR)  
 Gujarat, DIST. RAJKOT-360024  
**IN**  
**CONTACT PERSON : VIREN PATEL**

**THE FOLLOWING SAMPLE(S) WAS/WERE SUBMITTED AND IDENTIFIED BY/ON BEHALF OF THE CUSTOMER AS :**

**PRODUCT DESCRIPTION**      MELAMINE PLATE  
**COLOUR**      WHITE  
**SAMPLE RECD ON**      30/03/2019      **TESTING PERIOD :** 02/04/2019 - 10/04/2019

**RESULT SUMMARY**

TESTS	PASS	FAIL	REMARKS
OVERALL MIGRATION	P		

**Remarks :**  
 P = Pass  
 F = Fail  
 # = See Remarks

**per pro SGS India Private Ltd.**

*Sandip*

**SANDIP BHUSHAN**  
**ASST. MANAGER**  
 Email your Test Report Related Enquiries at Feedback.HLT@sgs.com

JOE No. : 1948801326      4374463      Page 1 of 3      Control No.: 1048002675

This document is issued by the Company under its General Conditions of Service printed overleaf or available on request and accessible at [http://www.sgs.com/terms\\_and\\_conditions.htm](http://www.sgs.com/terms_and_conditions.htm), for electronic format documents, subject to Terms and Conditions for Electronic Documents at [www.sgs.com/terms\\_e-document.htm](http://www.sgs.com/terms_e-document.htm). Attention is drawn to the limitation of liability, indemnification and jurisdiction issues defined therein. Any holder of this document is advised that information contained hereon reflects the Company's findings at the time of its intervention only and within the limits of Client's instructions, if any. The Company's sole responsibility is to its Client and this document does not exonerate parties to a transaction from exercising all their rights and obligations under the transaction documents. This document cannot be reproduced except in full, without prior written approval of the Company. Any unauthorized alteration, forgery or falsification of the content or appearance of this document is unlawful and offenders may be prosecuted to the fullest extent of the law. Unless otherwise stated the results shown in this test report refer only to the sample(s) tested and such sample(s) are retained for 30 days only. This document cannot be reproduced except in full, without prior approval of the Company.

**SGS India Pvt. Ltd.**      Consumer and Retail, Testing Laboratory Plot No. 21, Sector-3, MT Manesar, Gurgaon District, Haryana-122050 (India) Phone:(91-124) 678 7800

Member of the SGS Group (SGS SA)

**SGS**

**TEST REPORT**

**Report No. : MAN:HL:1048002632**      **DATE :10/04/2019**  
 \*1048002632\*

**R E S U L T S**      **REQ**

**OVERALL MIGRATION**  
**With reference to Commission Regulation EU No 10/2011 of 14 January 2011 Annex III and Annex V for selection of condition and EN 1186-1:2002 for selection of test methods**  
 EN 1186-3:2002 aqueous food simulants by total immersion method; (1st Migration)

Simulant Used	Test Condition	Result (mg/dm <sup>2</sup> )	Reporting Limit (mg/dm <sup>2</sup> )	Permissible Limit (mg/dm <sup>2</sup> )
3% Acetic Acid	70 °C for 2 Hours	ND	2.0	10
10% Ethanol	70 °C for 2 Hours	ND	2.0	10
Distilled Water	70 °C for 2 Hours	ND	2.0	10

**CONCLUSION:**      PASS

**Sample Description:** Melamine Plate

**Note :**  
 1. mg/dm<sup>2</sup> = milligram per square decimeter  
 2. °C = degree Celsius  
 3. ND = Not Detected  
 4. Testing has been subcontracted to SGS approved lab.  
 5. Testing has been performed as per client's request.  
 6. Permissible Limit is according to Commission Regulation (EU) No 10/2011 of 14 January 2011 with amendments.

**Remark:**  
 1. Analytical tolerance of aqueous simulants is 2mg/dm<sup>2</sup> or 12mg/kg.  
 2. Test condition & simulant were specified by client.

\*\*\*\*\* End of Page\*\*\*\*\*

JOE No. : 1948801326      4374463      Page 2 of 3      Control No.: 1048002675

This document is issued by the Company under its General Conditions of Service printed overleaf or available on request and accessible at [http://www.sgs.com/terms\\_and\\_conditions.htm](http://www.sgs.com/terms_and_conditions.htm), for electronic format documents, subject to Terms and Conditions for Electronic Documents at [www.sgs.com/terms\\_e-document.htm](http://www.sgs.com/terms_e-document.htm). Attention is drawn to the limitation of liability, indemnification and jurisdiction issues defined therein. Any holder of this document is advised that information contained hereon reflects the Company's findings at the time of its intervention only and within the limits of Client's instructions, if any. The Company's sole responsibility is to its Client and this document does not exonerate parties to a transaction from exercising all their rights and obligations under the transaction documents. This document cannot be reproduced except in full, without prior written approval of the Company. Any unauthorized alteration, forgery or falsification of the content or appearance of this document is unlawful and offenders may be prosecuted to the fullest extent of the law. Unless otherwise stated the results shown in this test report refer only to the sample(s) tested and such sample(s) are retained for 30 days only. This document cannot be reproduced except in full, without prior approval of the Company.

**SGS India Pvt. Ltd.**      Consumer and Retail, Testing Laboratory Plot No. 21, Sector-3, MT Manesar, Gurgaon District, Haryana-122050 (India) Phone:(91-124) 678 7800

Member of the SGS Group (SGS SA)



Your Companion Forever

# C O N T E N T

## HoReCa Collection

Matt Dinnerware	06	Mugs	48
Platters	12	Round Dinnerware	52
Serving Bowls	24	Urmi Dinnerware	54
Single & Double Serving	28	Square Round Dinnerware	56
Miniatures	34	Serving Trays	60
Co-Ordinates	40		



TESTED FOR



100%  
FOOD GRADE



HEAT  
RESISTANT



BREAK  
RESISTANT



DISH  
WASHER SAFE



FADE PROOF



SATIN PROOF



LIGHT WEIGHT



Your Companion Forever



## MATT DINNERWARE

It is made of pure 100% melamine food grade, break resistant & dishwasher safe, for those who adorn a fine taste of simplicity.



## PERSIAN DINNERWARE

### BUFFET PLATE

HD-5021

Size : 12.5" | 32cm

₹ 360/-

Qty.: 24

### DINNER PLATE

HD-5022

Size : 10.75" | 27.5cm

₹ 305/-

Qty.: 36

### MEDIUM PLATE

HD-5023

Size : 8.75" | 22.5cm

₹ 225/-

Qty.: 36

### SMALL PLATE

HD-5024

Size : 7.5" | 19cm

₹ 175/-

Qty.: 48



### KATORI

HD-5025

Size : 3.5" | 9cm | 150ml

₹ 100/-

Qty.: 72

### VEG. BOWL

HD-5026

Size : 4" | 10cm | 250ml

₹ 110/-

Qty.: 72

### SOUP BOWL

HD-5027

Size : 4.5" | 11.5cm | 300ml

₹ 120/-

Qty.: 48

### SERVING BOWL

HD-5028

Size : 5" | 13cm | 400ml

₹ 130/-

Qty.: 48

## ROCK DINNERWARE

### DINNER PLATE

HD-5042

Size : 10.75" | 27.5cm

₹ 360/-

Qty.: 24

### MEDIUM PLATE

HD-5043

Size : 8.75" | 22.5cm

₹ 275/-

Qty.: 36

### SMALL PLATE

HD-5044

Size : 7.5" | 19cm

₹ 185/-

Qty.: 48



### KATORI

HD-5045

Size : 3.5" | 9cm | 150ml

₹ 85/-

Qty.: 72

### VEG. BOWL

HD-5046

Size : 4" | 10cm | 200ml

₹ 100/-

Qty.: 72

### SOUP BOWL

HD-5047

Size : 4.5" | 11.5cm | 300ml

₹ 110/-

Qty.: 48



### SERVING BOWL

HD-5048

Size : 5.5" | 14cm | 400ml

₹ 230/-

Qty.: 48

### SERVING BOWL

HD-5049

Size : 6.5" | 16.5cm | 600ml

₹ 295/-

Qty.: 36



## ACE DINNERWARE

**DINNER PLATE**  
HD-5062

Size : 11" | 28cm  
₹ 305/-  
Qty.: 36

**SMALL PLATE**  
HD-5064

Size : 7.5" | 19cm  
₹ 185/-  
Qty.: 48



**KATORI**  
HD-5065

Size : 3.5" | 9cm | 150ml  
₹ 85/-  
Qty.: 72

**VEG. BOWL**  
HD-5066

Size : 4" | 10cm | 250ml  
₹ 100/-  
Qty.: 72

**SOUP BOWL**  
HD-5067

Size : 4.5" | 11.5cm | 350ml  
₹ 110/-  
Qty.: 48

**SERVING BOWL**  
HD-5068

Size : 5.5" | 14cm | 450ml  
₹ 220/-  
Qty.: 48

**SERVING BOWL**  
HD-5069

Size : 6.5" | 16.5cm | 750ml  
₹ 260/-  
Qty.: 48

## WAVE DINNERWARE

**DINNER PLATE**  
HD-5002

Size : 11" | 28cm  
₹ 360/-  
Qty.: 24

**SMALL PLATE**  
HD-5004

Size : 7.5" | 19cm  
₹ 185/-  
Qty.: 48



**MINI KATORI**  
HD-5005

Size : 3" | 7.5cm | 80ml  
₹ 70/-  
Qty.: 144

**KATORI**  
HD-5006

Size : 3.5" | 9cm | 140ml  
₹ 85/-  
Qty.: 72

**VEG. BOWL**  
HD-5007

Size : 4" | 10cm | 200ml  
₹ 105/-  
Qty.: 72

**SOUP BOWL**  
HD-5008

Size : 4.5" | 11.5cm | 300ml  
₹ 115/-  
Qty.: 48

**SERVING BOWL**  
HD-5009

Size : 5.5" | 14cm | 400ml  
₹ 220/-  
Qty.: 48

**SERVING BOWL**  
HD-5010

Size : 6.5" | 16.5cm | 500ml  
₹ 295/-  
Qty.: 36







*Your Companion Forever*



## THE DINNERWARE

Bring convenience to your dinner table with this classic dinnerware that comprises of separate pieces for unmatched convenience. It has been crafted from fine-quality material for extended durability to add a refined touch to your dining experience.



**FOR AND ELEGANT  
DINING EXPERIENCE**

The beautiful designs are perfect both for special occasions, and to make everyday special!



## ROUND MATT DINNERWARE

**DINNER PLATE**  
**RD-1047**

Size : **11" | 28cm**  
₹ 240/-  
Qty.: 36

**SMALL PLATE**  
**RD-1048**

Size : **7.5" | 19cm**  
₹ 145/-  
Qty.: 48



**ELEGANCE KATORI**  
**UD-2008**

Size : **3.5" | 9cm | 150ml**  
₹ 90/-  
Qty.: 72

**ELEGANCE VEG. BOWL**  
**UD-2009**

Size : **4" | 10cm | 200ml**  
₹ 100/-  
Qty.: 72

**ELEGANCE SOUP BOWL**  
**UD-2010**

Size : **4.5" | 11.5cm | 300ml**  
₹ 110/-  
Qty.: 48

**ELEGANCE SER. BOWL**  
**SD-9024**

Size : **5.5" | 14cm | 560ml**  
₹ 225/-  
Qty.: 36

**ELEGANCE SER. BOWL**  
**SD-9025**

Size : **6.5" | 16.5cm | 960ml**  
₹ 290/-  
Qty.: 36

## URMI MATT DINNERWARE

**DINNER PLATE**  
**UD-2006**

Size : **11" | 28cm**  
₹ 250/-  
Qty.: 36

**SMALL PLATE**  
**UD-2007**

Size : **7.5" | 19cm**  
₹ 150/-  
Qty.: 48



## MARVEL CASSEROLE WITH LID

**UD-2014**

Size : **7.5" | 19cm | 1.4 Ltr.**  
₹ 500/-  
Qty.: 12+12





Your Companion Forever



# PLATTERS

A one-of-its-kind platter to serve that extra love to your guests.

## GRILL PLATTER

HP-6043

Size : 11"X7" | 28X18cm

₹ 510/-

Qty.: 24



## SMOOTH PLATTER

HP-6044

Size : 13"X5" | 33X12.7cm

₹ 425/-

Qty.: 24

## BOTTLE PLATTER WITH DIP

HP-6041

Size : 14"X4" | 35.5X10cm

₹ 495/-

Qty.: 24



## BAT PLATTER WITH DIP

HP-6042

Size : 16"X5" | 40.5X12.5cm

₹ 475/-

Qty.: 24



## LEAF PLATTER

HP-6001

Size : 11.5"X5" | 29X12.5cm

₹ 380/-

Qty.: 36

## TRACK PLATTER

HP-6002

Size : 12"X6" | 30.5X15cm

₹ 500/-

Qty.: 24

HP-6003

Size : 14"X6" | 35.5X15cm

₹ 610/-

Qty.: 24



## FLAT PLATTER

HP-6004

Size : 13"X4.25" | 33X11cm

₹ 410/-

Qty.: 48

## BAMBOO PLATTER

HP-6008

Size : 13"X4" | 33X10cm

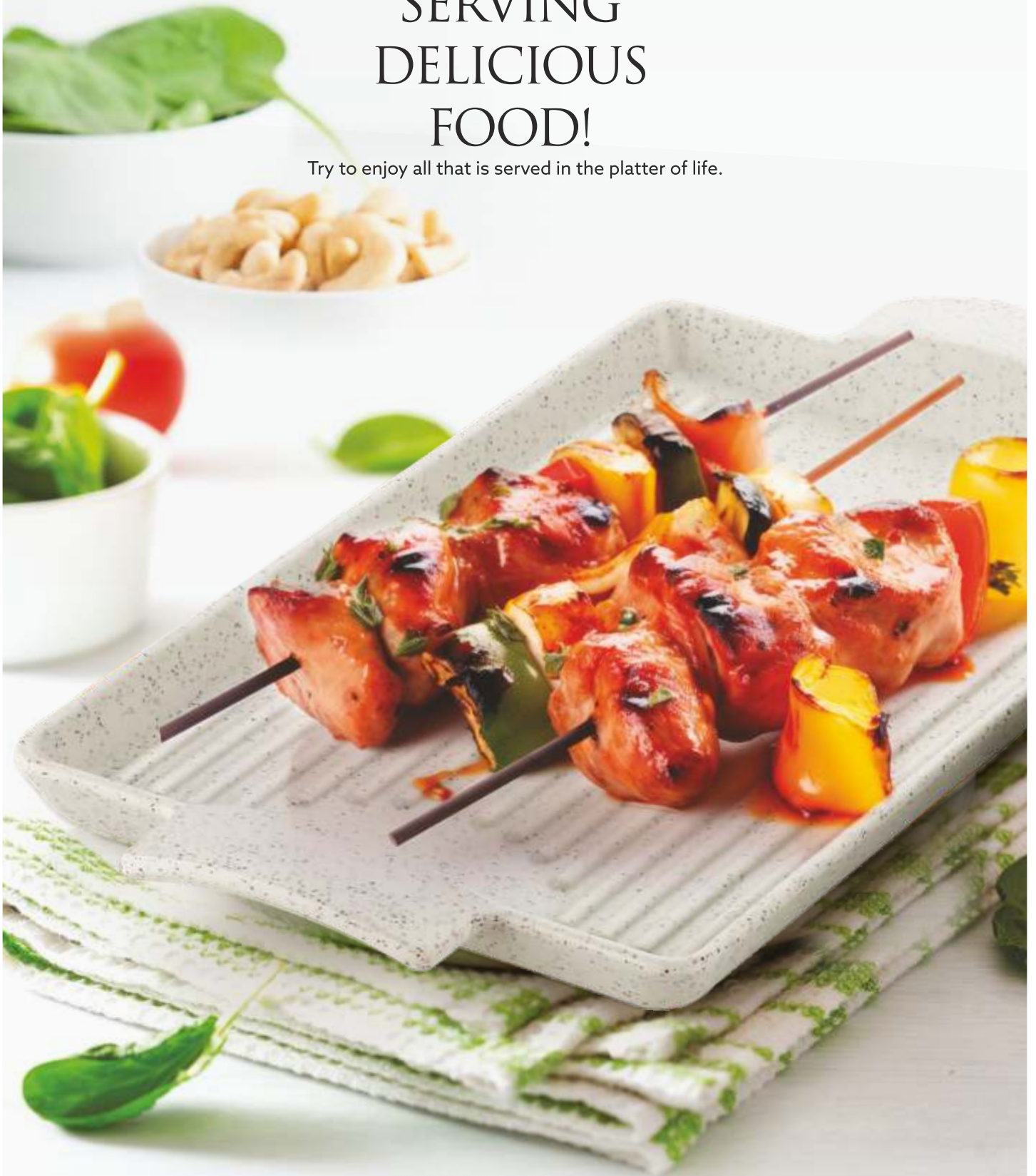
₹ 450/-

Qty.: 24



# STYLISH PLATTERS FOR SERVING DELICIOUS FOOD!

Try to enjoy all that is served in the platter of life.





## TANDOORI PLATTER

HP-6010  
Size : 13"X5.25" | 33X13cm  
₹ 525/-  
Qty.: 24

## LOG PLATTER

HP-6005  
Size : 8.85"X5.5" | 22.5X14cm  
₹ 440/-  
Qty.: 24

HP-6006  
Size : 10.60"X6.5" | 27X16.5cm  
₹ 580/-  
Qty.: 24



## GRAPHITE SLATE

HP-6011  
Size : 11"X7" | 28X18cm  
₹ 560/-  
Qty.: 24

## BBQ PLATTER

HP-6009  
Size : 8.75"X5.5" | 22X14cm  
₹ 185/-  
Qty.: 48







## CRACK PLATTER

HP-6034

Size : 10.5"X7.5" | 26.5X19cm

₹ 450/-

Qty.: 24

## SUPREME PLATTER

HP-6033

Size : 10"X7" | 25.5X18cm

₹ 500/-

Qty.: 24



## EXCLUSIVE PLATTERS

The extra-thick melamine body offers high strength and break-resistant, making them ideal for everyday use.



**GLARE**<sup>®</sup>  
Your Companion Forever



## SHOVEL PLATTER

HP-6035

Size : 10"X7" | 25.5X18cm

₹ 350/-

Qty.: 36

## WIDE PLATTER

HP-6032

Size : 10"X7" | 25.5X18cm

₹ 480/-

Qty.: 24



## HAMMERED RECT. PLATTER

HP-6012

Size : 8"X5.5" | 20.5X14cm

₹ 315/-

Qty.: 48

HP-6013

Size : 10"X7" | 25.5X18cm

₹ 505/-

Qty.: 24

HP-6014

Size : 12"X8" | 30.5X20cm

₹ 660/-

Qty.: 24

## ROUND STONE SLATE

HP-6015

Size : 8.5" | 21.5cm

₹ 370/-

Qty.: 24

HP-6016

Size : 10.5" | 26.5cm

₹ 550/-

Qty.: 24





## STYLISH PLATTERS

This gives a very elegant look to your dining table and will leave a very good Impression on your guests.

### SWING PLATTER

HP-6036  
Size : 10"X7" | 25.5X18cm  
₹ 455/-  
Qty.: 24



### CURVED PLATTER

HP-6017  
Size : 9"X6.5" | 23X16.5cm  
₹ 255/-  
Qty.: 36

HP-6018  
Size : 11.5"X8.5" | 29X21.5cm  
₹ 450/-  
Qty.: 24



### BAT PLATTER

HP-6024  
Size : 14"X4.25" | 35.5X11cm  
₹ 350/-  
Qty.: 24

HP-6025  
Size : 16"X5" | 40.5X13cm  
₹ 470/-  
Qty.: 24

### PIZZA BAT

HP-6027  
Size : 11" | 28cm  
₹ 690/-  
Qty.: 12

HP-6028  
Size : 13" | 33cm  
₹ 930/-  
Qty.: 12



### FRIES PLATTER

HP-6022  
Size : 10.5"X5" | 26.5X13cm  
₹ 240/-  
Qty.: 24

HP-6023  
Size : 12.25"X6" | 31X15cm  
₹ 390/-  
Qty.: 24

### ROUND PAN

HP-6019  
Size : 9.6"X6.5" | 24.5X16.5cm  
₹ 270/-  
Qty.: 36

HP-6020  
Size : 11.4"X7.5" | 29X19cm  
₹ 390/-  
Qty.: 24

HP-6021  
Size : 13"X9" | 33X23cm  
₹ 510/-  
Qty.: 24





## CLAW PLATTER

HP-6031

Size : 10.50"X7.5" | 26.5X19cm

₹ 450/-

Qty.: 24

## PETAL PLATTER

HP-6037

Size : 12"X5.25" | 30.5X13.5cm

₹ 280/-

Qty.: 24

HP-6038

Size : 14"X5.5" | 35.5X14cm

₹ 400/-

Qty.: 24



## SERVING PAN

A recipe has no soul. you, as the cook, must bring soul to the recipe.



**GLARE**<sup>®</sup>  
Your Companion Forever



## SOOP PLATTER

HP-6039

Size : 9"X7" | 23X18cm

₹ 380/-

Qty.: 24

## CRATE PLATTER

HP-6040

Size : 10.50"X7" | 26.5X18cm

₹ 310/-

Qty.: 24



## STONE PLATTER

HP-6029

Size : 12" | 30.5cm

₹ 1265/-

Qty.: 12



## OVAL PLATTER

HP-6007

Size : 9"X6.5" | 23X16.5cm

₹ 240/-

Qty.: 24



## DOTS PLATE

HP-6026

Size : 6" | 15cm

₹ 200/-

Qty.: 48



## SERVING HAPPINESS ON TIME, EVERY TIME

if you don't have a smile while serving food, then even if you serve elixir, then it will feel like serving poison.  
So, have a smile on your face.



**GLARE**<sup>®</sup>

*Your Companion Forever*



## SERVING BOWLS

This bowl is designed to make for an elegant and minimalistic dining option for everyday use.



## SQUARE BOWL



**HB-7001**  
Size : 5.5" | 14cm | 700ml  
₹ 385/-  
Qty.: 24

**HB-7002**  
Size : 7.5" | 19cm | 2.0L  
₹ 820/-  
Qty.: 12

**HB-7003**  
Size : 10" | 25.5cm | 5.0L  
₹ 1700/-  
Qty.: 6



**HB-7004**  
Size : 12" | 30.5cm | 8.5L  
₹ 1970/-  
Qty.: 6

## ROUND BOWL

**HB-7005**  
Size : 6" | 15cm | 500ml  
₹ 535/-  
Qty.: 24

**HB-7006**  
Size : 8" | 20cm | 1.5L  
₹ 880/-  
Qty.: 12

**HB-7007**  
Size : 10" | 25.5cm | 3.0L  
₹ 1265/-  
Qty.: 6

**HB-7008**  
Size : 12" | 30.5cm | 6.0L  
₹ 1750/-  
Qty.: 6



## ELITE BOWL

**HB-7009**  
Size : 7.5" | 19cm | 300ml  
₹ 270/-  
Qty.: 24

**HB-7010**  
Size : 9" | 23cm | 600ml  
₹ 400/-  
Qty.: 24

**HB-7011**  
Size : 10.5" | 27cm | 900ml  
₹ 530/-  
Qty.: 12

## FLOWER BOWL

**HB-7012**  
Size : 8" | 20cm | 800ml  
₹ 550/-  
Qty.: 24

**HB-7013**  
Size : 9.5" | 24cm | 1.4L  
₹ 805/-  
Qty.: 24

**HB-7014**  
Size : 11.5" | 29cm | 2.4L  
₹ 1050/-  
Qty.: 12





## FOOD BASKET ROUND

HB-7017  
Size : 9.5" | 24cm | 1.6L  
₹ 430/-  
Qty.: 12

## FOOD BASKET RECTANGLE

HB-7018  
Size : 13.5"x9.5" | 34x24cm | 2.8L  
₹ 660/-  
Qty.: 12

## ROUGH BOWL

HB-7015  
Size : 7.5" | 19cm | 500ml  
₹ 395/-  
Qty.: 24



## NOODLE BOWL

HB-7016  
Size : 5.25" | 13cm | 600ml  
₹ 225/-  
Qty.: 40

## SOUP BOWL WITH HANDLE

HB-7019  
Size : 4.5" | 11.5cm | 430ml  
₹ 250/-  
Qty.: 40





## HANDI WITH LID

**HB-7029**  
 Size : 3.75" | 9.5cm | 200ml  
 ₹ 250/-  
 Qty.: 36

**HB-7030**  
 Size : 5" | 13cm | 500ml  
 ₹ 455/-  
 Qty.: 24

**HB-7031**  
 Size : 6" | 15cm | 800ml  
 ₹ 610/-  
 Qty.: 12

**HB-7032**  
 Size : 7" | 18cm | 1.3L  
 ₹ 810/-  
 Qty.: 8

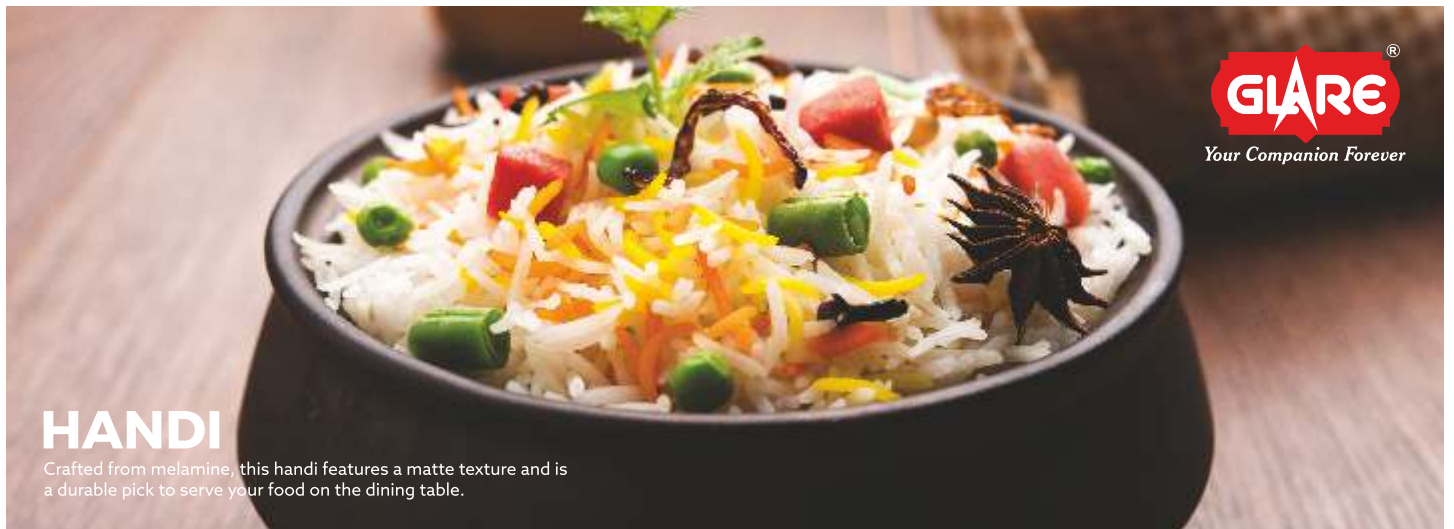
## HANDI

**HB-7020**  
 Size : 3.75" | 9.5cm | 200ml  
 ₹ 175/-  
 Qty.: 36

**HB-7022**  
 Size : 5" | 13cm | 500ml  
 ₹ 320/-  
 Qty.: 24

**HB-7024**  
 Size : 6" | 15cm | 800ml  
 ₹ 435/-  
 Qty.: 12

**HB-7026**  
 Size : 7" | 18cm | 1.3L  
 ₹ 610/-  
 Qty.: 12



**GLARE**  
 Your Companion Forever

## HANDI

Crafted from melamine, this handi features a matte texture and is a durable pick to serve your food on the dining table.



## BUCKET BOWL

**HB-7028**  
 Size : 6" | 15cm | 550ml  
 ₹ 340/-  
 Qty.: 16



Your Companion Forever



## SINGLE & DOUBLE SERVING

Functional and beautiful bowls are truly perfect for your dish.



## BIRYANI BOWL

**SD-9001**  
Size : **9.5"** | **24cm** | **400ml**  
₹ 305/-  
Qty.: 36

**SD-9002**  
Size : **10.5"** | **27cm** | **500ml**  
₹ 385/-  
Qty.: 36

## NAPPY BOWL

**SD-9003**  
Size : **6.25"** | **16cm** | **450ml**  
₹ 160/-  
Qty.: 48

**SD-9004**  
Size : **7"** | **18cm** | **600ml**  
₹ 220/-  
Qty.: 48



## KADAI

**SD-9005**  
Size : **7"** | **18cm** | **500ml**  
₹ 240/-  
Qty.: 36

**SD-9006**  
Size : **8"** | **20cm** | **700ml**  
₹ 350/-  
Qty.: 36

## GLORY BOWL

**SD-9011**  
Size : **6"** | **15cm** | **600ml**  
₹ 160/-  
Qty.: 48

**SD-9012**  
Size : **6.5"** | **16.5cm** | **800ml**  
₹ 195/-  
Qty.: 48





## SYMPHONY BOWL

**SD-9013**

Size : **4.5"** | **11.5cm** | **300ml**

₹ 145/-

Qty.: 48

**SD-9014**

Size : **6"** | **15cm** | **700ml**

₹ 255/-

Qty.: 24

**SD-9015**

Size : **6.75"** | **17cm** | **1.1L**

₹ 305/-

Qty.: 24

## CHINESE BOWL

**SD-9009**

Size : **6"** | **15cm** | **700ml**

₹ 210/-

Qty.: 48



**SD-9010**

Size : **6.75"** | **17cm** | **1L**

₹ 260/-

Qty.: 48



## RUSH BOWL

**SD-9020**

Size : **5.5"** | **14cm** | **550ml**

₹ 200/-

Qty.: 36

**SD-9021**

Size : **6.5"** | **16.5cm** | **850ml**

₹ 255/-

Qty.: 36

## PENDANT BOWL

**SD-9018**

Size : **5.5"** | **14cm** | **500ml**

₹ 225/-

Qty.: 36



**SD-9019**

Size : **6.5"** | **16.5cm** | **800ml**

₹ 290/-

Qty.: 36

## SINGLE & DOUBLE SERVING

Adds a lot of style to your dining and serving and at the same time is versatile for various serving and dining table.



Your Companion Forever



### EVA KADAI

SD-9016

Size : 8" | 20cm | 400ml

₹ 260/-

Qty.: 36

SD-9017

Size : 9" | 23cm | 600ml

₹ 350/-

Qty.: 36

### OYSTER BOWL

SD-9007

Size : 9" | 23cm | 400ml

₹ 265/-

Qty.: 36

SD-9008

Size : 10" | 25cm | 600ml

₹ 385/-

Qty.: 36





## ACE SERVING BOWL

HD-5068  
 Size : 5.5" | 14cm | 450ml  
 ₹ 220/-  
 Qty.: 48

HD-5069  
 Size : 6.5" | 16.5cm | 750ml  
 ₹ 260/-  
 Qty.: 48

## ROCK SERVING BOWL

HD-5048  
 Size : 5.5" | 14cm | 400ml  
 ₹ 230/-  
 Qty.: 48

HD-5049  
 Size : 6.5" | 16.5cm | 600ml  
 ₹ 295/-  
 Qty.: 36



## WAVE SERVING BOWL

HD-5009  
 Size : 5.5" | 14cm | 400ml  
 ₹ 220/-  
 Qty.: 48

HD-5010  
 Size : 6.5" | 16.5cm | 500ml  
 ₹ 295/-  
 Qty.: 36

## SERVE WITH PRIDE

our design speaks of returning to earth on a burst of original colors and shapes to enrich table service.



**GLARE**<sup>®</sup>  
 Your Companion Forever



FOOD WITH LOVE!

Good food  
Good mood!

This is good looking, easy to use and clean.  
This bowl makes for an elegant and minimalistic dining option for everyday use.

**GLARE**<sup>®</sup>

Your Companion Forever

## GLANCE SERVING BOWL

SD-9026

Size : 4.5" | 11.50cm | 480ml

₹ 160/-

Qty.: 36

SD-9027

Size : 5.25" | 13.30cm | 730ml

₹ 220/-

Qty.: 36



## ELEGANCE SERVING BOWL

SD-9024

Size : 5.5" | 14cm | 560ml

₹ 225/-

Qty.: 36

SD-9025

Size : 6.5" | 16.5cm | 960ml

₹ 290/-

Qty.: 36



## ROUND SCOOP BOWL

SD-9022

Size : 5.5"X7.75" | 14X19.5cm | 500ml

₹ 250/-

Qty.: 36

SD-9023

Size : 6.5"X9" | 16.5X23cm | 900ml

₹ 350/-

Qty.: 36





Your Companion Forever



## MINIATURES

these miniatures comes in an attractive color & finish.



### RAMEKIN BOWL

HM-8001  
Size : 2.5" | 6.5cm  
₹ 45/-  
Qty.: 96

HM-8003  
Size : 3.5" | 9cm  
₹ 85/-  
Qty.: 96

### LEAF BOWL

HM-8004  
Size : 4" | 10cm  
₹ 110/-  
Qty.: 144



### LEAF PLATE

HM-8005  
Size : 6" | 15cm  
₹ 220/-  
Qty.: 48

### LEAF DISH

HM-8006  
Size : 4.5" | 11.5cm  
₹ 100/-  
Qty.: 144





Your Companion Forever



### WAVE SPOUT

HM-8007  
Size : 3.5" | 9cm  
₹ 90/-  
Qty.: 144

### ROUND SCOOP

HM-8008  
Size : 3.5" | 9cm  
₹ 75/-  
Qty.: 144

HM-8009  
Size : 4.5" | 11.5cm  
₹ 85/-  
Qty.: 144



### STRIP BOWL

HM-8014  
Size : 2.5" | 6.5cm  
₹ 50/-  
Qty.: 72

### DUAL BOWL

HM-8011  
Size : 4.5"X2.5" | 11X6.5cm  
₹ 70/-  
Qty.: 144





## WEDGE BOWL

HM-8012  
Size : 3" | 7.5cm  
₹ 45/-  
Qty.: 144

## MAYONNAISE BOWL

HM-8013  
Size : 3.5" | 9cm  
₹ 60/-  
Qty.: 144



## SHELL BOWL

HM-8020  
Size : 5.5" | 14cm  
₹ 130/-  
Qty.: 72

HM-8021  
Size : 6.5" | 16.5cm  
₹ 170/-  
Qty.: 72



## CRATE PLATE

HM-8022  
Size : 6"X4" | 15X10cm  
₹ 95/-  
Qty.: 96



## TRIO BOWL

HM-8010  
Size : 7.5"X2.5" | 19X6.5cm  
₹ 220/-  
Qty.: 48



## TRIO SAUCE PLATE

HM-8024  
Size : 10.25"X3.5" | 26X8.6cm  
₹ 325/-  
Qty.: 36



## TWIN SAUCE PLATE

HM-8023  
Size : 9.5"X4" | 24X10.5cm  
₹ 220/-  
Qty.: 48



**"UNLEASH  
FLAVOR WITH  
SAUCE"**

**GLARE**<sup>®</sup>

Your Companion Forever



# YOUR MEAL, YOUR WAY, SERVED WITH OUR DINNERWARE

Section plate for snacks & sauces which is perfect for serving up variety of tastes.





Your Companion Forever



## CO-ORDINATES

It is also light weight and chip resistance making it suitable for daily use.





## FRENCH PLATE

CO-10001  
Size : 6.25" | 16cm  
₹ 145/-  
Qty.: 48

## SQUARE SNACK PLATE

CO-10002  
Size : 5.5" | 14cm  
₹ 100/-  
Qty.: 96

CO-10003  
Size : 6.75" | 17cm  
₹ 140/-  
Qty.: 96



## SNACK PLATE

CO-10004  
Size : 5" | 13cm  
₹ 75/-  
Qty.: 96

CO-10005  
Size : 6" | 15cm  
₹ 105/-  
Qty.: 96

CO-10006  
Size : 7" | 17cm  
₹ 150/-  
Qty.: 48



## SAMOSA PLATE

CO-10007  
Size : 6" | 15cm  
₹ 135/-  
Qty.: 48





## BAMBOO SNACK PLATE

CO-10009  
Size : 7" | 18cm  
₹ 190/-  
Qty.: 48

## OVAL CHIP & DIP

CO-10008  
Size : 10" | 25.5cm  
₹ 225/-  
Qty.: 36



## PASTA PLATE

CO-10013  
Size : 10" | 25.5cm  
₹ 265/-  
Qty.: 48

## RIO SNACK PLATE

CO-10018  
Size : 7" | 18cm  
₹ 155/-  
Qty.: 72

CO-10019  
Size : 12" | 30.5cm  
₹ 540/-  
Qty.: 24





## STYLISH CO-ORDINATES

Bring convenience to your snack table with this snack plate that comes with an attractive color & finish.

### HARMONY BOWL

**CO-10010**  
Size : **5.3" | 13.5cm | 500ml**  
₹ 150/-  
Qty.: 48



### GLORY BOWL

**SD-9011**  
Size : **6" | 15cm | 600ml**  
₹ 160/-  
Qty.: 48

**SD-9012**  
Size : **6.5" | 16.5cm | 800ml**  
₹ 195/-  
Qty.: 48

### SYMPHONY BOWL

**SD-9013**  
Size : **4.5" | 11.5cm | 300ml**  
₹ 145/-  
Qty.: 48

**SD-9014**  
Size : **6" | 15cm | 700ml**  
₹ 255/-  
Qty.: 24

**SD-9015**  
Size : **6.75" | 17cm | 1.1L**  
₹ 305/-  
Qty.: 24





Your Companion Forever

## STYLISH CO-ORDINATES

It has been crafted from pure 100% melamine food grade material for extended durability to add a refined touch to your dining experience.

### RUSH BOWL

SD-9020

Size : 5.5" | 14cm | 550ml

₹ 200/-

Qty.: 36

SD-9021

Size : 6.5" | 16.5cm | 850ml

₹ 255/-

Qty.: 36



### PENDANT BOWL

SD-9018

Size : 5.5" | 14cm | 500ml

₹ 225/-

Qty.: 36

SD-9019

Size : 6.5" | 16.5cm | 800ml

₹ 290/-

Qty.: 36

### CHINESE BOWL

SD-9009

Size : 6" | 15cm | 700ml

₹ 210/-

Qty.: 48

SD-9010

Size : 6.75" | 17cm | 1L

₹ 260/-

Qty.: 48



## SANDWICH PLATE

CO-10027  
Size : 7" | 18cm  
₹ 190/-  
Qty.: 48



## DOSA PLATE

CO-10028  
Size : 14.25"X10.5" | 36X27cm  
₹ 510/-  
Qty.: 24

“FOOD SPEAKS  
ON ITSELF, WE CONTRAST IT”



**GLARE**<sup>®</sup>  
Your Companion Forever

### 3 PARTITION PLATE

CO-10012  
Size : 9"X9" | 23X23cm  
₹ 300/-  
Qty.: 36



### 5 PARTITION PLATE

CO-10011  
Size : 13"X9.5" | 33X24cm  
₹ 450/-  
Qty.: 24

### 6 PARTITION PLATE

CO-10020  
Size : 14"X10" | 35.5X25.5cm  
₹ 500/-  
Qty.: 24



### PARTITION PLATES

Sections Divided, Mess Trays for Adults  
Lunch, Pav Bhaji Plate, Camping, Events &  
Every Day Use Kitchenware.

## PICKLE SET 10PCS.

ST-13038

Size : 8"X7.5"X3.5" | 20X19X9cm

₹ 800/-

Qty.: 16 Set



## AURA JAR SET 9 PCS.

ST-13049

Size : 10.5"X10.5"X4.5" | 26.5X26.5X11.5cm

₹ 1500/-

Qty.: 06 Set

## CONDIMENT BOWL SET 10PCS.

ST-13034

Size : 10"x3.5"x4" | 25.5X9X10cm

₹ 550/-

Qty.: 24 Set



## RIO SOUP SET 3 PCS.

ST-13017

Size : 8"X4.25"X3.5" | 20.5X11X9cm

₹ 450/-

Qty.: 16 Set



Your Companion Forever



## MUGS

Designed keeping in mind traditional clay cups and mugs.





## TEA GLASS

MT-12007

Size : 2.5"X3" | 6.5X7.5cm | 125ml

₹ 75/-

Qty.: 48

## COFFEE CUP

MT-12002

Size : 3"X2.75" | 7.5X7cm | 200ml

₹ 130/-

Qty.: 72



## MILK MUG

MT-12003

Size : 3.25"X3.75" | 8X9.5cm | 300ml

₹ 150/-

Qty.: 72



## CANNY MUG

MT-12006

Size : 3"X3.5" | 7.5X9cm | 330ml

₹ 170/-

Qty.: 36

## COFFEE MUG

MT-12004

Size : 3.25"X4" | 8X10cm | 330ml

₹ 170/-

Qty.: 36



## JUMBO MUG

MT-12005

Size : 3.5"X4.5" | 9X11.5cm | 440ml

₹ 180/-

Qty.: 24





*Your Companion Forever*

# TRADITIONAL TEA-COFFEE CUP & MUGS

these mugs is made of pure 100% melamine food grade, break resistant & dishwasher safe,  
Have a good grip while sipping tea, coffee, soup or hot cocoa.



*Enjoy your best beverages!*



Your Companion Forever



## ROUND DINNERWARE

This dinnerware will add beauty to your dining area, It is convenient to clean and maintain.



**BUFFET PLATE  
RD-1002**  
Size : 12.5" | 32cm  
₹ 285/-  
Qty.: 36

**DINNER PLATE  
RD-1003**  
Size : 11" | 28cm  
₹ 240/-  
Qty.: 36

**MEDIUM PLATE  
RD-1004**  
Size : 9" | 23cm  
₹ 210/-  
Qty.: 36

**SMALL PLATE  
RD-1005**  
Size : 7.5" | 19cm  
₹ 145/-  
Qty.: 48

**MINI KATORI  
RD-1009**  
Size : 2.9" | 7.5cm | 80ml  
₹ 55/-  
Qty.: 192

**MINI KATORI  
RD-1010**  
Size : 3.15" | 8cm | 110ml  
₹ 60/-  
Qty.: 192

**KATORI  
RD-1011**  
Size : 3.5" | 9cm | 200ml  
₹ 80/-  
Qty.: 72



**VEG. BOWL  
RD-1012**  
Size : 4" | 10cm | 250ml  
₹ 90/-  
Qty.: 72

**SOUP BOWL  
RD-1013**  
Size : 4.5" | 11.5cm | 300ml  
₹ 100/-  
Qty.: 48



**OVEL SERVING PLATE  
RD-1006**  
Size : 12" | 30.5cm  
₹ 335/-  
Qty.: 24

**OVEL SERVING PLATE  
RD-1007**  
Size : 14" | 35.5cm  
₹ 470/-  
Qty.: 24

**SERVING BOWL  
RD-1014**  
Size : 6" | 15cm | 400ml  
₹ 120/-  
Qty.: 48

**SERVING BOWL (HEAVY)  
RD-1042**  
Size : 7.5" | 19cm | 800ml  
₹ 360/-  
Qty.: 24



**SERVING BOWL  
RD-1015**  
Size : 8.5" | 21.5cm | 1.2L  
₹ 305/-  
Qty.: 24



**CASSEROLE WITH LID  
RD-1020**  
Size : 6.5" | 16.5cm | 800ml  
₹ 455/-  
Qty.: 12

**CASSEROLE WITH LID  
RD-1023**  
Size : 7" | 18cm | 1.3L  
₹ 560/-  
Qty.: 12

**CASSEROLE WITH LID  
RD-1026**  
Size : 8" | 20cm | 1.6L  
₹ 645/-  
Qty.: 12



Your Companion Forever



# URMI DINNERWARE

Made of pure 100% melamine food grade for reliable everyday use.



**URMI BUFFET PLATE  
UD-2001**

Size : 12.5" | 32cm  
₹ 310/-  
Qty.: 36

**URMI DINNER PLATE  
UD-2002**

Size : 11" | 28cm  
₹ 250/-  
Qty.: 36

**URMI MEDIUM PLATE  
UD-2003**

Size : 9" | 23cm  
₹ 220/-  
Qty.: 36

**URMI SMALL PLATE  
UD-2004**

Size : 7.5" | 19cm  
₹ 150/-  
Qty.: 48

**BUFFET PLATE  
RD-1001**

Size : 13.5" | 34cm  
₹ 360/-  
Qty.: 36



**DEEP PLATE  
RD-1046**

Size : 10" | 25.5cm  
₹ 240/-  
Qty.: 48



**RIM SOUP PLATE  
RD-1008**

Size : 9" | 23cm  
₹ 230/-  
Qty.: 48



**STRAIGHT KATORI  
RD-1030**

Size : 3" | 7.5cm | 100ml  
₹ 60/-  
Qty.: 144

**STRAIGHT KATORI  
RD-1031**

Size : 3.35" | 8.5cm | 150ml  
₹ 70/-  
Qty.: 96

**STRAIGHT SOUP BOWL  
RD-1032**

Size : 4.3" | 11cm | 300ml  
₹ 115/-  
Qty.: 72



**SERVING BOWL WITH LID  
RD-1017**

Size : 8.5" | 21.5cm | 1.2L  
₹ 520/-  
Qty.: 12



**CASSEROLE WITH LID  
RD-1029**

Size : 10" | 25.5cm | 1.8L  
₹ 1280/-  
Qty.: 6



Your Companion Forever



## SQUARE ROUND DINNERWARE

the dinnerware is great for families or for individuals who frequently entertain.





**SQR. BUFFET PLATE  
SQ-3001**

Size : 12.5" | 32cm  
₹ 330/-  
Qty.: 36

**SQR. DINNER PLATE  
SQ-3002**

Size : 11" | 28cm  
₹ 275/-  
Qty.: 36

**SQR. SMALL PLATE  
SQ-3003**

Size : 7.5" | 19cm  
₹ 175/-  
Qty.: 48

**SQR. KATORI  
SQ-3004**

Size : 3.5" | 9cm | 180ml  
₹ 95/-  
Qty.: 72

**SQR. VEG. BOWL  
SQ-3005**

Size : 4" | 10cm | 250ml  
₹ 105/-  
Qty.: 72

**SQR. SOUP BOWL  
SQ-3006**

Size : 4.5" | 11.5cm | 300ml  
₹ 120/-  
Qty.: 48

**SQR. SERVING BOWL  
CO-10010**

Size : 5.3" | 13.5cm | 500ml  
₹ 150/-  
Qty.: 48



**SQR. SERVING BOWL  
SQ-3007**

Size : 7.5" | 19cm | 1.2L  
₹ 260/-  
Qty.: 24

**SQR. SERVING BOWL  
SQ-3008**

Size : 8" | 20cm | 1.4L  
₹ 370/-  
Qty.: 24

**SQR. SERVING BOWL WITH LID  
SQ-3010**

Size : 8" | 20cm | 1.4L  
₹ 580/-  
Qty.: 12

**SYMPHONY SAUCER  
RD-1035**

Size : 6.75" | 17cm  
₹ 110/-  
Qty.: 48



**STRAIGHT SOUP PLATE  
RD-1045**

Size : 6.75" | 17cm  
₹ 115/-  
Qty.: 72





**MODISH SERVING SPOON**  
**UD-2011**  
Size : 9.5" | 24cm  
₹ 145/-  
Qty.: 72



**RICE SERVING SPOON**  
**RD-1036**  
Size : 9.5" | 24cm  
₹ 140/-  
Qty.: 72



**TRENDY SERVING SPOON**  
**UD-2005**  
Size : 9.5" | 24cm  
₹ 140/-  
Qty.: 72



**DESSERT FORK**  
**RD-1038**  
Size : 7" | 18cm  
₹ 60/-  
Qty.: 216



**DESSERT SPOON**  
**RD-1037**  
Size : 7" | 18cm  
₹ 60/-  
Qty.: 216



**STYLO SOUP SPOON**  
**RD-1039**  
Size : 5" | 13cm  
₹ 50/-  
Qty.: 288



**SYMPHONY SOUP SPOON**  
**RD-1041**  
Size : 5.7" | 14.5cm  
₹ 55/-  
Qty.: 288



**PERSIAN SOUP SPOON**  
**HD-5029**  
Size : 5.7" | 14.5cm  
₹ 60/-  
Qty.: 288



**SQUARE COASTER**  
**CO-10015**  
Size : 3.5" | 9cm  
₹ 50/-  
Qty.: 144



**ROUND COASTER**  
**CO-10014**  
Size : 3.5" | 9cm  
₹ 45/-  
Qty.: 144

A FAMILY  
THAT  
EATS  
TOGETHER  
STAYS  
TOGETHER





Your Companion Forever



## SERVING TRAY

It is also light weight and chip resistance making it suitable for daily use.



## NEO TRAY

**SMALL**  
TR-4001

Size : 9"X7" | 23X18cm  
₹ 225/-  
Qty.: 24

**MEDIUM**  
TR-4002

Size : 12"X9" | 30.5X23cm  
₹ 360/-  
Qty.: 24

**LARGE**  
TR-4003

Size : 15"X11" | 38X28cm  
₹ 500/-  
Qty.: 12

**EXTRA LARGE**  
TR-4004

Size : 18"X12" | 46X30.5cm  
₹ 700/-  
Qty.: 12

## NEO MATT TRAY

**SMALL**  
TR-4006

Size : 9"X7" | 23X18cm  
₹ 225/-  
Qty.: 24

**MEDIUM**  
TR-4007

Size : 12"X9" | 30.5X23cm  
₹ 360/-  
Qty.: 24

**LARGE**  
TR-4008

Size : 15"X11" | 38X28cm  
₹ 500/-  
Qty.: 12



## CAMRY TRAY

**SMALL**  
TR-4011

Size : 12"X7" | 30.5X18cm  
₹ 265/-  
Qty.: 24

**MEDIUM**  
TR-4012

Size : 15"X8" | 38X20cm  
₹ 380/-  
Qty.: 24

**LARGE**  
TR-4013

Size : 15"X10.5" | 38X26.5cm  
₹ 545/-  
Qty.: 12

**EXTRA LARGE**  
TR-4014

Size : 18"X12" | 46X30.5cm  
₹ 720/-  
Qty.: 12

## DELICATE TRAY

**SMALL**  
TR-4031

Size : 10"X6" | 25X15cm  
₹ 210/-  
Qty.: 24

**MEDIUM**  
TR-4032

Size : 13"X9" | 33X23cm  
₹ 370/-  
Qty.: 24

**LARGE**  
TR-4033

Size : 16"X11.25" | 41X28.5cm  
₹ 570/-  
Qty.: 12





## DAZZLING TRAY

**SMALL**  
TR-4021

Size : 8"X8" | 20X20cm  
₹ 410/-  
Qty.: 12

**MEDIUM**  
TR-4022

Size : 10"X10" | 25X25cm  
₹ 550  
Qty.: 12

**LARGE**  
TR-4023

Size : 12"X12" | 30X30cm  
₹ 690/-  
Qty.: 10

## GRASP TRAY

**SMALL**  
TR-4041

Size : 10.25"X7" | 26X18cm  
₹ 285/-  
Qty.: 24

**MEDIUM**  
TR-4042

Size : 12.5"X8.75" | 32X22cm  
₹ 420/-  
Qty.: 24

**LARGE**  
TR-4043

Size : 15.25"X11" | 39X28cm  
₹ 640/-  
Qty.: 12

**EXTRA LARGE**  
TR-4044

Size : 17.5"X13" | 44X33cm  
₹ 850/-  
Qty.: 12



## HAWK TRAY

**SMALL**  
TR-4045

Size : 12"X9" | 30.5X23cm  
₹ 470/-  
Qty.: 24

**MEDIUM**  
TR-4046

Size : 14"X10" | 35.5X25.5cm  
₹ 580/-  
Qty.: 24

**LARGE**  
TR-4047

Size : 16"X11" | 40.5X28cm  
₹ 710/-  
Qty.: 12



## EXCLUSIVE TRAYS

with inspiring and innovative designed shape, asymmetrical tray is the perfect complement to the servings.

**GLARE**<sup>®</sup>

Your Companion Forever

## RANGE OF TRAYS

Made from pure 100% melamine, Glare products are free from urea and other additives that make it an choice for serving in your kitchen. They come with great decal prints to add to the decor. They are food safe, dishwasher safe and BPA free.



Your Companion Forever



## ARM TRAY

MINI

TR-4051

Size : 10.25"X7" | 26X17.75cm

₹ 230/-

Qty.: 24

SMALL

TR-4052

Size : 12.5"X8.75" | 31.75X22.25cm

₹ 340/-

Qty.: 24

MEDIUM

TR-4053

Size : 15.25"X11" | 38.75X28cm

₹ 550/-

Qty.: 12

LARGE

TR-4054

Size : 17.5"X12.75" | 44.5X32.5cm

₹ 670/-

Qty.: 12

## GLAM TRAY

MINI

TR-4061

Size : 10.25"X7" | 26X17.75cm

₹ 250/-

Qty.: 24

SMALL

TR-4062

Size : 12.25"X9" | 31X23cm

₹ 360/-

Qty.: 24

MEDIUM

TR-4063

Size : 15.25"X10.25" | 38.75X26cm

₹ 510/-

Qty.: 12

LARGE

TR-4064

Size : 18"X11" | 45.75X28cm

₹ 670/-

Qty.: 12





*Your Companion Forever*

## WE ARE LEADING EXPORTER FOR NATIONAL & INTERNATIONAL NETWORK



[www.glareindia.com](http://www.glareindia.com)





*Your Companion Forever*

Manufacturer :

**GLARE HOUSEHOLD PVT. LTD.**

Plot No.22, Survey No.166, Near Shantidham Society, National Highway 27, Gondal Road,  
Village - Veraval (Shapar) Dist. Rajkot - 360 024, Gujarat (INDIA)

Contact : +91 - 2827 253712 | Email : sales@glareindia.com | Web.: www.glareindia.com

Glareindia  